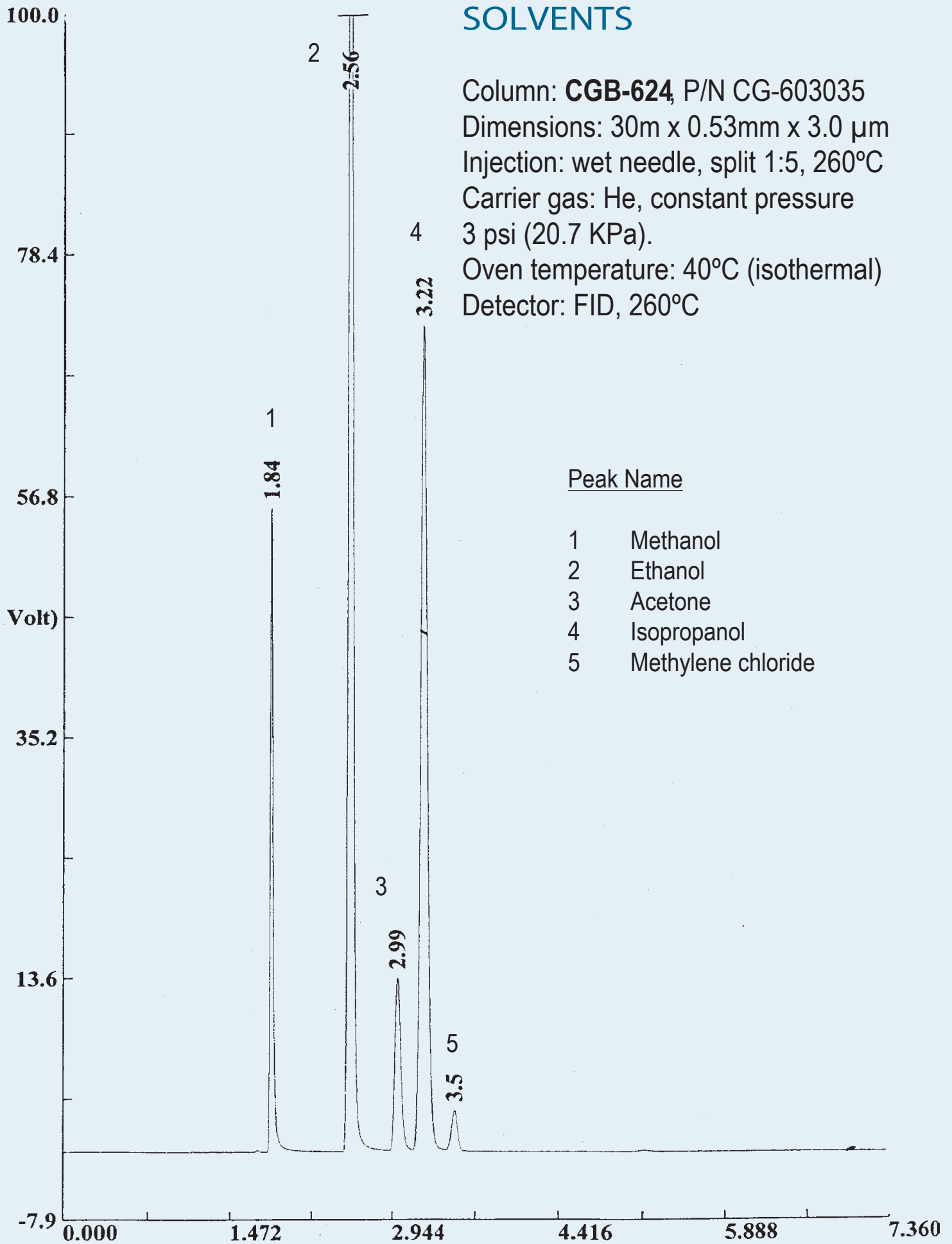


SOLVENTS

Column: **CGB-624**, P/N CG-603035
Dimensions: 30m x 0.53mm x 3.0 μ m
Injection: wet needle, split 1:5, 260°C
Carrier gas: He, constant pressure
3 psi (20.7 KPa).
Oven temperature: 40°C (isothermal)
Detector: FID, 260°C



Peak Name

- | | |
|---|--------------------|
| 1 | Methanol |
| 2 | Ethanol |
| 3 | Acetone |
| 4 | Isopropanol |
| 5 | Methylene chloride |